

NÚMERO 506

JUAN ROSELLÓN, ANNE NEUMANN AND HANNES WEIGT

Removing Cross-Border Capacity Bottlenecks in the European Natural Gas Market: A Proposed Merchant-Regulatory Mechanism

Importante

Los Documentos de Trabajo del CIDE son una herramienta para fomentar la discusión entre las comunidades académicas. A partir de la difusión, en este formato, de los avances de investigación se busca que los autores puedan recibir comentarios y retroalimentación de sus pares nacionales e internacionales en un estado aún temprano de la investigación.

De acuerdo con esta práctica internacional congruente con el trabajo académico contemporáneo, muchos de estos documentos buscan convertirse posteriormente en una publicación formal, como libro, capítulo de libro o artículo en revista especializada.

SEPTIEMBRE 2011



www.cide.edu

• D.R. © 2011, Centro de Investigación y Docencia Económicas A.C.
• Carretera México Toluca 3655, Col. Lomas de Santa Fe, 01210,
• Álvaro Obregón, México DF, México.
• www.cide.edu

• Dirección de Publicaciones
• publicaciones@cide.edu
• Tel. 5081 4003

Abstract

We propose a merchant-regulatory framework to promote investment in the European natural-gas network infrastructure based on a price cap over two-part tariffs. As suggested by Vogelsang (2001) and Hogan et al., (2010), a profit maximizing network operator (NO) facing this regulatory constraint will intertemporally rebalance the variable and fixed part of its two-part tariff so as to expand the congested pipelines, and converge to the Ramsey-Boiteaux equilibrium. We confirm this with actual data from the European natural gas market by comparing the bi-level price-cap model with a base case, a no-regulation case, and a welfare benchmark, and performing various sensitivity analyses. In all cases, the incentive model is the best decentralized regulatory alternative to efficiently develop the entire pipeline system in Europe.

Resumen

Proponemos un esquema comercial-regulatorio para promover la inversión en la infraestructura de red para gas natural en Europa que se basa en precios máximos sobre tarifas de dos partes. Como sugieren Vogelsang (2001) y Hogan et al., (2010), un operador de red que desea maximizar los beneficios y que se enfrente a un esquema regulatorio de este tipo, rebalanceará intertemporalmente las partes variable y fija de la tarifa de dos partes para expandir los ductos congestionados, además de converger al equilibrio de Ramsey-Boiteaux. Eso lo confirmamos con datos reales del mercado de gas natural europeo y comparamos el price cap de dos niveles con un caso base, un caso sin regulación y un benchmark de bienestar; además realizamos análisis de sensibilidad. En todos los casos, el modelo de incentivos es la mejor alternativa descentralizada para desarrollar eficientemente el sistema de gasoductos en Europa.

Introduction

This paper proposes a combined merchant-regulatory model to remove existing cross-border bottlenecks in the European long-distance natural gas pipeline system. We model a profit maximizing transport company facing a price cap over its two-part tariff as proposed by Vogelsang (2001) and Hogan *et al.*, (2010). A look to the map of the natural gas pipeline network system in Europe shows congestion bottlenecks in several cross-border areas such as those between Spain and France, United Kingdom (UK) and the European mainland, Norway and the European continent, the cross border areas among France, Belgium, The Netherlands, Luxembourg, and Germany (Benelux), as well as Russia and western Europe.¹ The International Energy Agency (IEA, 2009) estimates that natural-gas supply capacity in Europe will have to significantly increase by 2015 to meet such increasing demand. Most of this new supply will come from import sources in the UK, Norway and Russia as well as from liquid natural gas (LNG) from the Mediterranean and the Atlantic areas. Imports into the European Union (EU) will rise from 63% of total supply in 2010 to 77% in 2020. The increasing need to import gas necessitates not only additional supply infrastructure but also greater interconnection between EU countries to enable the large increments of imported gas to be absorbed efficiently within Europe, and to provide access to LNG supplies to countries without sea-born terminals.

The current outlook for natural-gas transmission investment in Europe is though not so encouraging. Few internal network interconnections have been recently built, new suppliers have not been able to enter into market, and investment in transmission capacity and storage has been an issue, especially in cross-border interconnections. There have been some initiatives to carry out several pipeline projects that relieve congestion such as between Norway and the UK, Russia and Germany, and among Russia, Bulgaria, Central Europe and Italy, as well as among Norway, Sweden, Denmark and Poland. However, there is not a consensus yet clear on the precise regulatory and investment structures that might bring these projects to reality. Uncertainty regarding the regulatory framework on investment for expanding natural-gas pipelines affects incentives to finance the necessary transmission expansion projects. One important progress, however, has been the recent creation of a European

¹ Similar congestion cross border issues are internationally present in diverse electricity networks in North America and Europe (see Rosellón and Weigt, 2011, and Myslikova, Rosellón and Zenón, 2011). The need to expand energy networks is also highly motivated by large-scale renewable system projects (see Fthenakis, Mason and Zweibel, 2009).

regulatory agency that in particular will oversee natural-gas transmission investment structure issues.²

In this paper we propose an incentive regulatory framework to promote investment of natural-gas network infrastructure based on a price cap over two-part tariffs. The basic idea is that, by facing this framework, a profit maximizing network operator (NO) will rebalance the variable and fixed part of its two-part tariff so as to expand the congested pipelines.³ A first intuitive question is why at all congestion in transmission networks take place. A basic problem with network providers is that they might find it more profitable not to expand the system because of the high revenues of keeping the pipelines congested. In other words, the marginal cost of new transportation capacity might be greater than the expected congestion cost of not adding an additional unit of capacity. Thus, the primal objective of an incentive method that seeks to reverse this congestion “trap” is to make the marginal cost of expansion lower than the one of congestion, and promote over-time convergence to an steady state optimum (or “expanding” equilibrium) where both variables remain equal and where allocative and productive efficiency are achieved (see Crew, Fernando and Kleindorfer, 1995).

In this study we show how price regulation can be used to solve this duality of incentives for natural-gas network so that congestion is removed in the short run, and investment in transmission expansion is achieved in the long run. This is carried out through the means of a bi-level programming model. The lower level of the model represents the welfare-maximizing process (typically managed by a system operator) within the European natural-gas pipeline network system where, for a given demand, production, LNG supplies, and imports are considered, as well as transportation, liquefaction, regasification and storage capacities. Capacity bottlenecks—and therefore congestion rents—are initially exogenously given. This lower-level model provides the optimal loads and nodal prices that are further an input of an upper-level model that represents the incentive regulatory framework to promote the expansion of the network through price-cap regulation. The complete bi-level programming model works in such a way that the NO operator will voluntarily expand the pipeline network, choosing the projects and their capacities (especially cross-border capacities) guided by the nodal-price differences. This process is such that not only considerable expansion of pipeline capacity will be achieved, but also convergence through time to a Pareto optimal (Ramsey-Boiteaux) equilibrium.

² Regulation (EC) No. 713/2009 of the European Parliament and of the Council of 13 July 2009: “Establishing an Agency for the Cooperation of Energy Regulators”. As we suggest below, an institutional comprehensive European regulatory approach is particularly relevant for our model.

³ Expansion in transmission networks can also be approached from the point of view of consumers that are willing to pay for excess (or buffer) capacity when they dislike facing any period of congestion (see Brito and Rosellón, 2011).

We further compare our results of this bi-level price-cap model with a base case, a no-regulation case, and a welfare benchmark. We are able to confirm with actual data from the European natural gas market that the price-cap model over two-part tariffs is the welfare-optimal decentralized regulatory alternative that efficiently develops the entire pipeline system in Europe. Our analysis proceeds as follows. In section 2, we review the literature on incentive regulation for transmission network expansion, and on natural gas transportation models. In section 3, we present the bi-level programming regulatory model (subsection 3.1), both with its lower level (dispatch welfare-maximizing problem) and its upper level (NO's profit maximization subject to a cap on its two-part-tariffs). We also describe in this subsection the model representing the welfare-optimal benchmark case. A detailed description of the data used is presented in 3.2. Results for the different considered scenarios are analyzed in section 4, in particular the base case (4.1) and the regulatory approach (4.2). The evaluation of results is provided in 4.3, while a sensitivity robustness analysis is performed in 4.4. Concluding remarks are finally provided in section 5.

1. State of the Literature

1.1. Incentive Regulation, Efficiency and Network Expansion

There are two main concepts in price regulation: regulation of the price level and regulation of the price structure. Price-level regulation refers to the long-run distribution of rents and risks between consumers and the firm. Price level regulation can achieve various efficiency goals, such as *allocative efficiency*, *productive efficiency* and *distributive efficiency*. According to the regulatory economics theory, the price of firms with increasing returns to scale or natural monopolies (such as gas pipelines) needs to be regulated so as to redistribute the monopolistic rent, and achieve a distance from marginal cost that is optimal (see Armstrong *et al.*, 1994, ch. 2, 3). Such optimal price cap is derived from the problem of a regulator that maximizes social welfare (expressed as the weighted sum of consumer and producer surpluses) subject to the individual rationality constraint (or break even constraint) of the firm with increasing returns. The solution to this problem provides the best Pareto solution under such a market failure. The optimal markup between price and marginal cost ends up being inversely proportional to the elasticity of demand. This is the well known (non-Bayesian) allocative-efficient Ramsey-Boiteaux equilibrium. Likewise, price-cap regulation might incentivize cost minimization (productive efficiency) by the regulated firm. In practice, it is usually combined with cost-of-service regulation so as to provide a cost-based

initial price cap that remains fixed over a regulatory lag, only usually adjusted by inflation and efficiency factors (*RPI-X* regulation).

Regulation of the structure of the price refers to the short-run allocation of costs and benefits among distinct types of consumers or markets. It can promote convergence to both the “expanding” equilibrium and the Ramsey-Boiteux equilibrium. Under price-structure regulation, a cap is set over an index of prices. Such an index is typically calculated as the weighted sum of prices to different consumers. There are two basic ways to establish weights under price-structure regulation: one with fixed weights —tariff-basket regulation— and another with variable weights —average revenue regulation—. Under the former regime, a maximum limit is established over an index

$$I(p) = \sum_{i=1}^n w_i p_i$$
, where p_i are the different prices and w_i are the fixed weights. Weights might be output (or throughput) quantities of the previous period (chained *Laspeyres*), quantities of the current period (*Paasche*), intertemporally fixed quantities (fixed *Laspeyres*), or projected quantities that correspond to the steady state equilibrium (ideal *Laffont-Tirole* weights, as in Laffont and Tirole, 1996).⁴ Variable weights are usually associated with average-revenue regulation which sets a cap on incomes per unit but that does not set fixed weights that limit the relative variation of prices. Compared to tariff-basket regulation, this confers the firm greater flexibility in tariff rebalancing (which is convenient for the firm under good for profit maximization under risk aversion and uncertain conditions) but lack of convergence to the welfare maximizing equilibrium. The literature has proved that, under non-stochastic (or stable) conditions of costs and demand —and myopic profit maximization (that is, when the firm does not take into account future periods in its current profit maximizing behavior)—, the use of the chained Laspeyres index makes the prices of the regulated firm intertemporally converge to Ramsey-Boiteux pricing (Vogelsang 2001, Vogelsang 1989, Bertolotti y Poletti, 1997, Loeb and Magat 1979, and Sibley, 1989). The chained-Laspeyres structure simultaneously reconciles two opposing objectives: the maximization of social welfare and the individual rationality of the firm (i.e., non-negative profits). Social surplus is redistributed to the monopoly in such a way that long-run fixed costs are recovered but, simultaneously, consumer surplus is maximized over time.⁵ Under similar stability conditions, and myopic profit maximization, average revenue regulation causes divergence from Ramsey prices.⁶

⁴ The steady state equilibrium is characterized by prices whose optimal distance from marginal cost is inversely proportional to the elasticity of demand. These are referred in the literature as the Ramsey-Boiteux prices (see Armstrong et al, 1994, ch. 3).

⁵ The social surplus is made up by consumer surplus, the producer surplus, and the government surplus (if present).

⁶ In a dynamic setting with changing cost and demand functions —and/or non-myopic profit maximization— the chained Laspeyres index (or any other weight index) generates prices that may diverge from the Ramsey structure

Price structure regulation is further used by Vogelsang (2001) and Hogan *et al.*, (2010) to solve transmission congestion, in the short run, as well as capital costs and investment issues in the long run. In a two-part tariff regulatory model with a variable (or usage) charge, and a fixed (or capacity) charge, the variable charge is mainly based on nodal prices and relieves congestion. Recuperation of long-term capital costs is achieved through the fixed charge that can be interpreted as the price for the right to use the transmission network. The fixed charge can also provide incentives for productive efficiency and, if it does not affect the number of transmission consumers, allocative efficiency—that is, convergence to the Ramsey price structure—can be intertemporally achieved.

The proper incentives for efficient investment in the expansion of the network in the Vogelsang and Hogan *et al.*, models are reached by the rebalancing of fixed and variable charges. Likewise, incentives for investment crucially depend on the type of weights used. For the Laspeyres index the NO will intertemporally invest until its transmission tariffs converge to Ramsey prices. However, this will not occur automatically since the firm faces a tension between short-run gains from congestion, and increases in capacity investment. Thus, when there is congestion in capacity the NO will expand the network because its profits increase with network expansion when congestion variable charges are marginally larger than the marginal costs of expanding capacity. On the contrary, in times of excess capacity, the variable charge of the two-part tariff will be reduced causing an increase in consumption. The fixed charge, in turn, increases so that total income augments despite the decrease in the variable charge. As a consequence, the NO ceases to invest in capacity expansion, and net profits expand since costs do not increase.

For electricity networks, Hogan *et al.*, (2010) upgraded merchant-regulatory model emphasizes the need to combine in a bi-level programming model an incentive price-cap Vogelsang's type of model (upper level problem) with a power-flow model (lower level problem), where dispatch is carried out by an independent system operator (ISO). The lower level problem provides the inputs (optimal flows and nodal prices) that are needed in the upper level problem so as to determine the optimal fixed and variable prices. Implementation of the model starts from an existing grid with historic market

(Neu, 1993, Fraser, 1995, and Law, 1995a,b, study the effects of the chained Laspeyres restriction under a changing demand function, non-uniform cost changes, and myopic profit maximization, respectively). Ramírez and Rosellón (2002) show that flexible-weight average-revenue regulation might be combined with other regulatory means to achieve a balance in the trade-off between risk management with consumer-surplus maximization by firms under high uncertainty. The use of flexible-weights during the initial stages of greenfield gas distribution projects (characterized by volatile cost and demand conditions) is consistent with investment attraction under uncertain dynamic behavior of demand since it is a laxer constraint for firms than fixed-weight regulation. Tariff-basket regulation is used afterwards, once the cost and demand conditions are stabilized.

price information used by the regulator to set up the two-part pricing constraint. Based on the available market information (demand, generation, network topology, etc.) the NO then identifies the lines to expand, and proceeds to auction the available transmission capacity. Meanwhile, the ISO manages actual dispatch, and collects the payoffs from loads and pays the generators according to locational marginal prices (the difference of these latter values represents the congestion rent of the system that is redistributed to the property-right holders). Finally, the NO sets the fixed fee according to the regulatory price cap.⁷

In this paper, we will carry out an application of the Hogan *et al.*, (2010) mechanism to the European natural gas networks. We will analyze how this bi-level programming model can incentivize the NO out from the congestion-trap equilibrium and expand the network systems through the rebalancing of the NO's fixed and variable fees in a process that will eventually intertemporally converge to the Ramsey-Boiteaux welfare-optimal equilibrium.

1.2. Natural Gas Transportation Models

The literature on natural gas transportation models mainly distinguishes three approaches. The system dynamic approach has been applied by two studies so far (Stäcker, 2004, Hallouche and Tamvaski, 2005). EWI Cologne has produced a series of linear optimization models (EUGAS, TIGER, MAGELAN), of which the TIGER model provides the most detailed dispatch model for Europe and is suited for identifying congestion (Perner and Seeliger, 2004; Lochner and Bothe, 2007). The dynamic model optimizes long-term European natural gas supply taking into account production and transportation facilities. Model outputs are mainly flows and supply costs. In order to allow for strategic behavior, market power and other market imperfections of the (European) natural gas market recent literature dominantly relies on the complementarity framework. In a first application Mathiessen *et al.*, (1987) show that the European natural gas market is best described by a Cournot duopoly. The following works by Golombek *et al.*, (1995, 1998) distinguish between up- and downstream players in the natural gas market and show the positive impact of market restructuring on upstream competition and welfare. Several streams within this literature evolved, which focus on (and study) different issues such as multi-period modeling and supply disruptions, double

⁷ The Hogan *et al.*, mechanism is further tested using simplified grids in Northwestern Europe (Benelux) and in Pennsylvania, New Jersey, Maryland (PJM) with realistic generation structures in Rosellón and Weigt (2011) and Myslíková, Rosellón and Zenón (2011), respectively. This testing results in the NO expanding the network so that prices develop in the direction of marginal costs. The nodal prices that were subject to a high level of congestion converge to a common marginal price level, and consumer and producer surpluses converge to the Ramsey-Boiteaux welfare optimal values.

marginalization, or the cartel creation of exporters settings. The World Gas Model (WGM) provides a high level of granularity in a game-theoretic context while still covering 95% of world natural gas production (Egging *et al.*, 2009). Holz (2009) discusses these different model families in more detail.

Abrell and Weigt (2011) combine the natural gas and electricity markets in a mixed complementary problem. Their main focus is on the interaction of natural gas as primary input to electricity generation. The European natural gas market is represented in a static manner without a real representation of pipelines, flows or other trading activities. Brito and Rosellón (2011) propose an alternative regulatory approach to expansion of gas transportation pipelines in terms of the welfare-optimal consumers' willingness to pay for excess capacity.

Investment in infrastructure in all of these models is best described as a net present value calculation optimization. Hence, even if the complementarity framework so far has attracted the largest share of research and literature it has yet not been able to include a convincing regulatory investment mechanism. Neumann *et al.*, (2009) design a welfare maximization approach subject to constraints of natural gas infrastructure facilities. The focus is on optimization of the long-distance transport neglecting influences of strategic company behavior on the exporter side, interaction of traders in Europe, or market power concerns on the intra-European transmission network level. As a result the model provides nodal (here regional) prices for natural gas on a monthly basis and therefore represents the lower level problem only. Building on Neumann *et al.*, (2000), Bauer *et al.*, (2011) attempts a basic application of the Hogan *et al.*, (2010) mechanism to natural gas pipelines in Europe. They show that an increasing pattern of welfare together with transmission expansion and consumer surplus increases. In our current paper, we carry out a more detailed analysis for different economic scenarios, comparing the basic Hogan *et al.*, model with a base case, a case of no regulation, and a welfare Ramsey-type benchmark. This will provide evidence of the advantages (or disadvantages) of the Hogan *et al.*, mechanism compared to other approaches as well as a characterization of its convergence to an efficient equilibrium. We now turn to our representation of the combination of the lower problem in Neumann *et al.*, (2009) with an upper level incentive regulation program. We are in particular interested in efficient investment incentives for a single European grid operator in natural gas whilst leaving out security of supply issues (such as supply disruptions etc.).

2. Model and Data

The model is designed to represent the actual market and adjusted accordingly to account for the proposed regulatory approach and a welfare optimal counterfactual setting. Following the underlying basic market model the regulatory and welfare model adjustments are presented. Afterwards the dataset for the analysis is presented.

2.1. Model

2.1.1. Basic Market Model

The basic (lower level) model setting is taken from the model definition of the InTraGas-Model following Neumann *et al.*, (2009). InTraGas represents the European natural gas market assuming a perfect competitive market accounting for network restrictions, LNG possibilities and storage facilities. The model is formulated representing a social planner maximizing social welfare in the whole system:

$$\begin{aligned} \max_{d, g, flow, LNGflow} \quad W = & \sum_{n, y, s} \int_0^{d_{n, y, s}^*} p(d_{n, y, s}) dd_{n, y, s} - \sum_{n, y, s} c_{n, y} g_{n, y, s} \\ & - \sum_{n, m, y, s} tc_{n, m} flow_{n, m, y, s} - \sum_{n, m, y, s} LNGtc_{n, m} LNGflow_{n, m, y, s} \end{aligned} \quad (1)$$

s. t.

$$g_{n, y, s} \leq g_{n, y}^{\max} \quad \text{Production constraint} \quad (2)$$

$$flow_{n, m, y, s} \leq flow_{n, m, y}^{\max} \quad \text{Pipeline constraint} \quad (3)$$

$$LNGflow_{n, m, y, s} \leq LNGflow_{n, m, y}^{\max} \quad \text{LNG route constraint} \quad (4)$$

$$\sum_m \frac{1}{\eta_{liq}} LNGflow_{n, m, y, s} \leq Liquefaction_{n, y}^{\max} \quad \text{Liquefaction constraint} \quad (5)$$

$$\sum_m \eta_{reg} LNGflow_{m, n, y, s} \leq Regasification_{n, y}^{\max} \quad \text{Regasification constraint} \quad (6)$$

$$store_{n, y, s} = store_{n, t, s-1} + \eta_{sto} s_{n, y, s}^{in} - s_{n, y, s}^{out} \quad \text{Storage balance} \quad (7)$$

$$store_{n,y,s} \leq store_{n,y}^{\max}$$

$$s_{n,y,s}^{in} \leq sin_{n,y}^{\max} \quad \text{Storage constraints} \quad (8)$$

$$s_{n,y,s}^{out} \leq sout_{n,y}^{\max}$$

$$g_{n,y,s} + s_{n,y,s}^{out} + \sum_m flow_{m,n,y,s} + \sum_m LNGflow_{m,n,y,s}$$

$$\geq d_{n,y,s} + s_{n,y,s}^{in} - \sum_m flow_{n,m,y,s} - \sum_m LNGflow_{n,m,y,s} \quad \text{Energy balance} \quad (9)$$

The objective of the model (equation 1) is to maximize social welfare W consisting of the gross consumer surplus (first term, right hand side) reduced by the total production costs (second term), pipeline transport costs (third term), and LNG transport costs (fourth term).

This objective is subject to several constraints representing the technical characteristics of natural gas production, transport, and storage. First, the total production g at any node $n \in N$ in each year $y \in Y$ and season $s \in S$ has to be within the upper production limit (g^{\max}) (equation 2). The same holds true for each pipeline connecting two nodes n and $m \in N$: the $flow$ has to remain within the pipeline capacity ($flow^{\max}$) (equation 3). For the $LNGflow$ the capacity limit ($LNGflow^{\max}$) is used to indicate which routes are available (equation 4) as those sea routes do not have a technical upper capacity limit similar to pipelines. LNG transport is limited by the available liquefaction and regasification facilities. For nodes n exporting LNG the sum of all $LNGflows$ to other nodes m needs to respect the available liquefaction capacity ($Liquefaction^{\max}$) accounting for the efficiency η_{liq} of the process (equation 5). The reverse holds for importing nodes n ; the sum of all ingoing $LNGflows$ from other nodes m are limited by the regasification capacity ($Regasification^{\max}$) accounting for the regasification efficiency η_{reg} (equation 6).

Storage plays an important role in natural gas markets to balance daily, weekly and seasonally variations and allow for a more stable usage of the transport capacities. Within the model storage is represented by a balance equation and capacity restrictions. The balance (equation 7) intertemporally links the storage level ($store$) of the former season $s-1$ to current season s by accounting for storage injections (s^{in}) and withdrawals (s^{out}) in the current period. The actual storage level, the injections and the withdrawals are limited by the respective available capacities ($store^{\max}$, sin^{\max} , $sout^{\max}$) (equation 8).

Finally the energy balance (equation 9) secures that for each node n of the network at any given period (y,s) injections consisting of production (g), withdrawals from the storage (s^{out}), and pipeline ($flow$) and LNG imports ($LNGflow$) from other nodes m have to be greater than or equal to the

withdrawals at that node consisting of local demand (d), storage injections (s^{in}), and pipeline ($flow$) and LNG exports ($LNGflow$) to other nodes m .

This basic model provides the underlying market representation for the different extension scenarios.

2.1.2. Regulatory Extension Approach

In the proposed regulatory setting we assume that a NO is responsible for collecting transmission revenues, bearing the network costs and deciding about capacity additions. The NO is subject to a profit cap linking inter-temporal revenues in a Laspeyres manner. The market clearing is taking place in a competitive setting as described before. Consequently the NO can only influence the market outcome by deciding about the available capacities but has no influence on the actual production, demand and LNG decisions.

The NO's profit (π) is given by the revenues due to the price differences ($p_m - p_n$) on the pipelines and the actual pipeline flow ($flow_{n,m}$) plus a fixed access fee that network users have to pay (F)⁸ minus the costs consisting of the transport costs (tc) and potential extension costs ($extc$) for newly built capacities ($newflow^{max}$):

$$\begin{aligned} \pi = & \sum_{n,m,y,s} (p_m - p_n) flow_{n,m,y,s} + \sum_y F_y \\ & - \sum_{n,m,y,s} tc_{n,m} flow_{n,m,y,s} - \sum_{n,m,y,s} extc_{n,m} newflow_{n,m,y,s}^{max} \end{aligned} \quad \text{NO's profit function} \quad (10)$$

The NO is subject to the regulatory constraint allowing him to increase the fixed fee if prices in the market drop and his congestion revenues decrease:

$$\frac{\sum_{n,m} (p_{m,y,s} - p_{n,y,s} - tc_{n,m}) flow_{n,m,y-1,s} + F_y}{\sum_{n,m} (p_{m,y-1,s} - p_{n,y-1,s} - tc_{n,m}) flow_{n,m,y-1,s} + F_{y-1}} \leq 1 + RPI - X \quad \text{regulatory cap} \quad (11)$$

The regulator might adjust the cap for inflation e.g. by the retail price index (RPI) and include individual efficiency target factors (X). As capacity additions typically reduce the market price differences in the system, the NO's revenue from gas transport would reduce which dis-incentivizes the NO to carry out investments. With the regulatory cap he can adjust the fixed fee to compensate the congestion revenue loss and refinance investments out.

New capacity ($newflow^{max}$) is added to existing capacity allowing for a higher flow on the transport routes. Equation 3 is adjusted accordingly:

⁸ The number of network users is normalized to 1.

$$flow_{n,m,y,s} \leq flow_{n,m,y}^{\max} + newflow_{n,m,y}^{\max} \quad \text{New pipeline constraint} \quad (12)$$

The regulatory approach is formulated as Mathematical Program with Equilibrium Constraints (MPEC): the NO maximizes its profit subject to the regulatory cap and the market clearing. The market clearing optimization (equation 1-2, 4-9, 12) is reformulated as equilibrium problem by deriving the corresponding Karush-Kuhn-Tucker conditions.

2.1.3. Welfare Optimal Extension

In order to evaluate the regulatory approach a counterfactual benchmark is calculated which leads to a welfare optimal expansion. This is obtained by including the possibility to extend the network (accounting for extension costs (*extc*) and for newly built capacities (*newflow^{max}*) within the welfare objective of equation 1:⁹

$$\begin{aligned} \max_{d,g,flow,LNGflow} \quad W = & \sum_{n,y,s} \int_0^{d_{n,y,s}^*} p(d_{n,y,s}) dd_{n,y,s} - \sum_{n,y,s} c_{n,y} g_{n,y,s} \\ & - \sum_{n,m,y,s} tc_{n,m} flow_{n,m,y,s} - \sum_{n,m,y,s} LNGtc_{n,m} LNGflow_{n,m,y,s} \\ & - \sum_{n,m,y,s} extc_{n,m} newflow_{n,m,y,s}^{\max} \end{aligned} \quad (13)$$

The welfare optimal extension model consists of equation 13, 2, 4-9, and 12 and is solved as quadratic constraint program (QCP).

2.2. Data

The underlying dataset follows Neumann *et al.*, (2009) and represents the European natural gas market including major exporters like Russia and LNG exporters like Nigeria. The considered time range is 2010 to 2020 with yearly steps and two seasons each; summer and winter. The network representation is a simplified setting of the existing European gas pipeline system. All demand, production, LNG, and storage facilities of one country are aggregated into one node. Connections between those nodes represent the summed up cross-border capacities of the respective connected countries.

Available production capacities are taken from IEA (2006), BP (2006) and Eurostat (2011) and increased or decreased till 2020 according to IEA (2008); production costs are based on OME (2005). Demand is assumed to be linear

⁹ The extension plan could typically be carried out by an ISO.

with an elasticity of -0.3 and a price of 10 €/MWh at the reference point. The corresponding seasonal reference demand is taken from Eurostat (2011) and based on the average monthly demand for the corresponding season in 2008 and 2009. The demand levels are adjusted till 2020 according to IEA (2008).

The network capacities are based on the ENTSOG European Natural Gas Network map (ENTSOG, 2011a). All pipelines connecting two countries are aggregated into a single capacity value. European network extensions are taken from the ENTSOG Ten-Year Network Development Plan (ENTSOG, 2001b). Regarding import lines only the North-Stream project is considered; going fully online with 27.5 bcm in 2015 and adding a second 27.5 bcm in 2018. All other major import projects (South-Stream, Nabucco) are not considered within this model setting. Transport costs are based on OME (2005) and depend on the length of a pipeline. As the geographic representation of the model is stylized we assume that the length of a pipeline is given by the distance between the two country centers.

Storage data is based on the GSE storage map (GSE, 2010a) and the adjustments till 2011 are taken from the GSE investment database (GSE, 2010b) with only accounting for projects which are already under construction or in the permitting phase. LNG data for the European terminals and major exporters is based on the GLE LNG map (GLE, 2010a) and adjustments till 2020 based on their investment database (GLE, 2010b). LNG transportation costs are approximated with 0.67 € per seamile and mcm; liquefaction losses (12%) and regasification losses (1%) are based on IEA (1994).

3. Scenarios and results

We analyze four different scenarios to evaluate the proposed regulatory approach given the European market setting. First the *Base Case* is simulated representing the expected development in Europe given the ENTSOG network extensions and projected demand and production changes till 2020. In the framework of our analysis this case is considered as the no-extension counterfactual as all extensions are externally defined and remain so in all other scenarios. This case also allows an evaluation of the underlying market model with respect to real market outcomes. However, the model purpose is to provide a framework for the evaluation of the regulatory approach and not to provide a comprehensive market forecast for Europe.

Second, the *Regulatory Approach* will be implemented. For this setting we assume a single NO to be in charge of investment decisions within Europe but not for import connections or connections outside Europe. Following the regulatory NO's logic, a non-regulated setting is also simulated (*Profit Case*--third scenario) in which the NO is maximizing its profits via network extensions but without any regulatory constraints. In a final scenario, the

Welfare counterfactual will be simulated which allows to compare the regulatory approach against a theoretic first best solution.

3.1. Base Case Results

The Base Case represents the underlying European market development in case of scheduled network extension following the ENTSOG Ten-Year Network Development Plan. For the initial conditions in 2010 the model reproduces the general market trends of the European natural gas market: African exports supply large fractions of the Spanish and Italian demand, Norwegian gas supplies Central Europe, and Russian imports are needed to supply East Europe, Germany and are also transported to Italy. African and Middle East LNG is transported to the Mediterranean countries and LNG from South America and Central Africa is supplying the East Cost of the Iberian Peninsula. The price level in the European countries in summer is about 8.2 €/MWh and 12.4 €/MWh in winter.

The assumed demand increase in Europe and the decline of local production leads to a price increase till 2020 (figure 1). For summer the average price increases to about 11.8 €/MWh, which represents a more than 40% higher price level. The winter price level is not increasing as drastically with 11% to 13.8 €/MWh till 2020. The price development also shows the impact of the assumed extension of the North-Stream pipeline leading to a price decrease in the respective years by about 10%, limiting the increasing price trend till 2020. The project also leads to shifts in the European pipeline flows. The additional Russian gas available directly in Germany is partly transmitted to France and Italy as the already existing connection via Belarus and Poland is still fully utilized. Furthermore the shift leads to reduced imports from Norway to Germany, and has impacts on the LNG situation in Europe. As a share of the French demand is now satisfied with Russian gas the need for LNG imports is declining while at the same time higher demand in Italy and Spain increases the need for LNG imports in those countries. Storage plays an important role in Central and Western Europe to utilize the available pipeline and LNG capacities in summer. Generally the storage capacities are fully utilized in the modeled countries.

3.2. Regulatory Approach

In the regulatory approach, the European network can be extended beyond the ENTSOG Ten-Year Network Development Plan if the NO can increase its profits by doing so. Extensions are limited to the European pipeline system and do not include import pipelines. Nevertheless, the transmission revenues are collected from all pipelines of the system. Thus congestion revenue

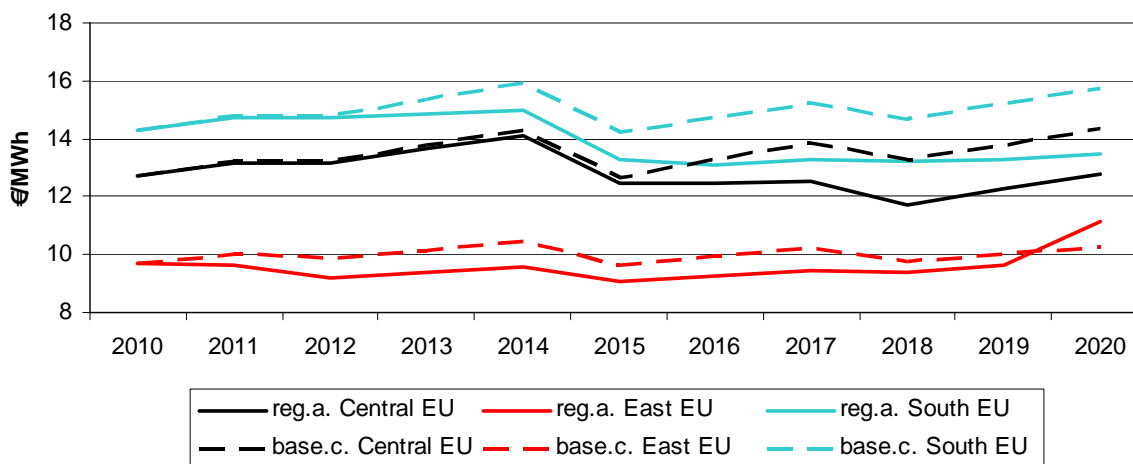
outside Europe can be utilized to finance investments in Europe in this setting. This assumption is adjusted in the sensitivity analysis.

Due to the extension possibility, the NO now invests into new pipeline connections. Up to 2015 the differences to the base case are limited. Extensions are mostly carried out to better interconnect the East European countries, and establish a larger transport capacity in the direction of Italy leading to a slight price convergence in this region. Central Europe is mostly unaffected by these extensions. With the introduction of the first and later on the second stage of the North-Stream pipeline, the German market has an oversupply of gas import possibilities. The NO therefore reroutes the Russian gas coming via Poland to the South. Austria becomes a new gas hub for Russian gas transmitting towards Italy in the South and in the direction of France via Switzerland. This is induced by the NO investments into the region of Austria, Czech Republic, Slovakia and Hungary and a major pipeline investment between Austria and France. The results highlight that the regulatory approach leads to an investment pattern that tries to maximize the usage of available pipeline connections and gas imports to regions with high prices.

The price development in the different regions shows the impact of the North-Stream project on the European market with its two price decreases in 2015 and 2018 (figure 1). Compared to the base case, the price increase is significant lower for Central Europe and South Europe even faces a price decrease till 2020. East Europe faces a slight price increase. The prices in continental Europe slowly converge till 2020 due to the network extensions.

The NO's fixed tariff component F is supposed to increase over the periods as the reduced congestion rent is compensated by the increased fixed income. However, in the basic model setting the fixed tariff is negative in most periods and only increase in 2016 and 2019; the years after the North-Stream segments go online. This result is due to the fact that we do not assume any *RPI* or X-Factor for the NO. As the underlying market conditions change (increase in demand with simultaneous decrease in domestic production), the yearly return is also affected and the NO needs to adjust the fixed tariff to keep the regulatory constraint in balance. This highlights the role of the regulator to define proper market forecasts to set appropriate targets.

FIGURE 1. PRICE DEVELOPMENT; BASE CASE AND REGULATORY APPROACH



3.3. Evaluation

Although the regulatory approach provides a significant network extension and corresponding price developments it is not clear whether this extension is a welfare improvement compared to an unregulated market. Therefore two counterfactuals are simulated: a welfare optimal extension pattern following the model described in Section 3.1.3 and a pure profit maximizing NO without a regulatory restriction. The later is an adjustment of the model described in Section 3.1.2 obtained by neglecting equation 11 and the fixed tariff component.

In a welfare optimal setting, the NO extends the pipeline network largely on similar paths as in the regulatory setting. Again the North-Stream project leads to more available Russian gas on the onshore pipelines, which is redistributed via Austria to Italy and France although the actual extension pattern between Austria, Hungary, Slovakia and the Czech Republic differs from the one in the regulatory setting. In total about 60% of the extension volume of the welfare optimal capacities is constructed in the regulatory case (table 1). About 16% of the capacity additions in the regulatory setting are not on connections also extended under welfare conditions showing that the general investment pattern of the regulated NO is quite similar to a social planner.

If the regulatory cap is not implemented and the NO is maximizing its profits without balancing variable revenue and the fixed tariff, the total investment volume is significantly reduced. Less than 30% of the welfare optimal capacity volume is reached of which about 25% are not on connections considered in the welfare case. The regulatory approach thus provides an improvement compared to a simple unregulated setting.

This last result still holds when prices are compared. The regulatory approach reaches a similar price level as the welfare case in the final period 2020, although the prices in Central and South Europe are higher in the regulatory case for earlier periods (figure 2). For East Europe the welfare case shows a much faster price increase and thus convergence to the continental European price level than in the regulatory approach. The profit case shows a higher price level in Central and South Europe and an intermediate price development in East Europe. The price differences between the regions remain till the last period; thus inner European congestion is not significantly reduced in this case.

The overall consumer and producer surplus development furthermore shows that the regulatory approach indeed approaches the welfare levels over the periods. Both the absolute welfare level and the share of producer rents moves in the direction of the welfare optimum (figure 3). Over the periods, a shift between producer and consumer surplus can be observed. In the profit setting the welfare development is similar to the base case in which no further additions take place. And due to congestion between the nodes also the producer surplus remains high.

The basic simulation results show that the regulatory approach indeed provides a way to achieve an investment pattern close to welfare optimal conditions.

FIGURE 2. PRICE DEVELOPMENT; REGULATORY APPROACH, PURE PROFIT AND WELFARE APPROACH

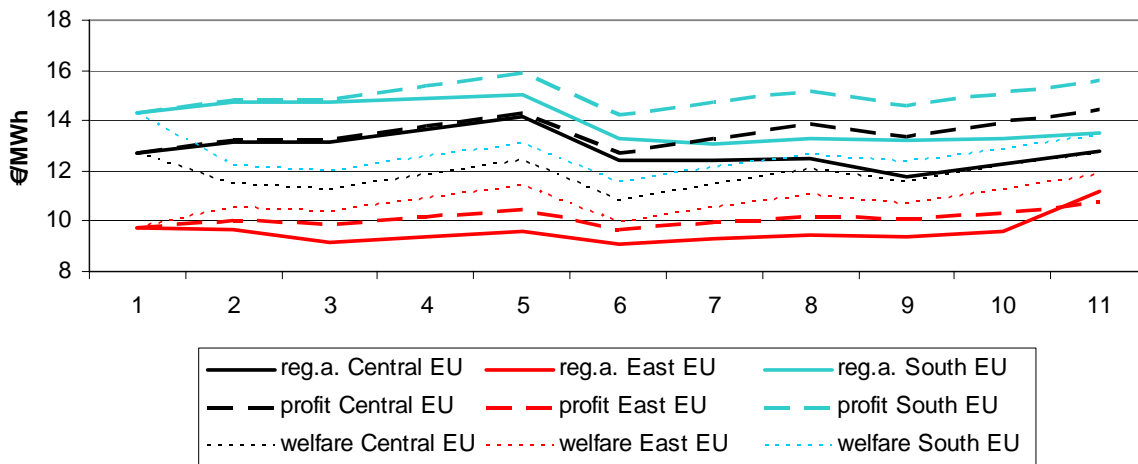
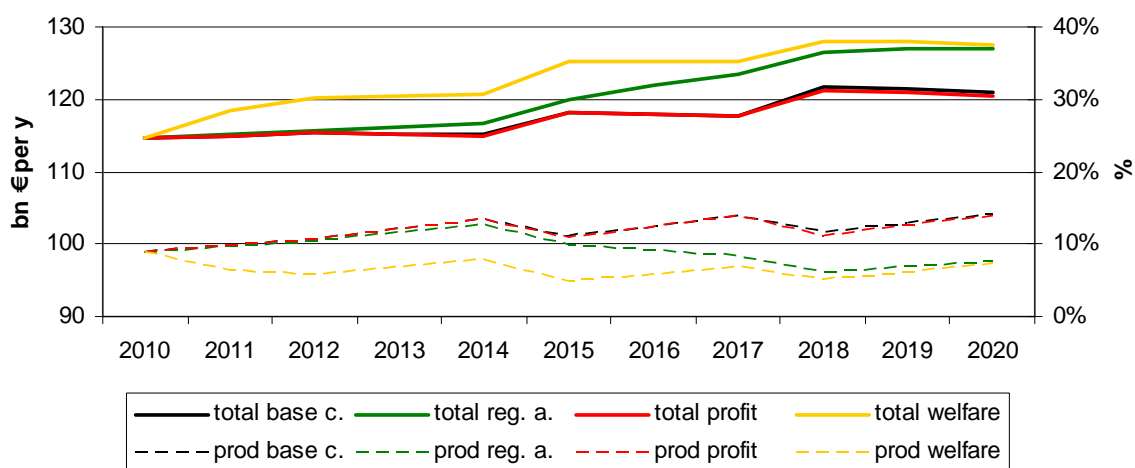


FIGURE 3: WELFARE DEVELOPMENT AND SHARE OF PRODUCER SURPLUS

TABLE 1. RESULT COMPARISON

	BASE CASE	PROFIT	REGULATORY APPROACH	WELFARE APPROACH
SURPLUS 2020 [BN € PER A]				
CONSUMER SURPLUS	103,85	103,85	117,30	118,24
PRODUCER SURPLUS	17,13	16,60	9,69	9,32
SUM	120,98	120,45	126,99	127,56
PRICES IN 2020 €/MWH				
CENTRAL EU	14,32	14,45	12,78	12,68
SOUTH EU	10,30	15,61	13,50	13,40
EAST EU	15,71	10,72	11,17	11,86
EXTENSIONS TILL 2020 [BCM/A]				
TOTAL	0	117,0	267,6	432,4
SIMILAR TO WELFARE CASE		85,7	224,0	
DIFFERENT FROM WELFARE CASE		31,3	43,6	
DIFFERENT IN WELFARE CASE				37,6

3.4. Sensitivities of Model Assumptions

The basic model assumption that the NO is only allowed to invest in Europe whereas the transmission revenue is collected from the entire grid is rather unlikely for a real world implementation. Thus we adjust the model definition to evaluate the impact on the results by changing the profit function (equation 10) of the NO: the income from pipeline transport (first term, right hand side) is only accounted for nodes connecting inner European nodes,

while transport on import pipelines into the European network are accounted with 50% assuming a profit/cost split with the NO of the exporting country. This approach represents a market framework in which a single entity (e.g. an independent system operator) can decide about network extensions within Europe whereas import projects would still require coordination with the exporting countries, and are not considered within the regulatory approach. Second, we adjust this approach again by also leaving out the revenues and costs from import pipelines thus limiting the regulatory approach completely to inner European connections.

Under those more restrictive conditions we nevertheless observe a lower price level (figure 4) and a faster welfare convergence (figure 5) than in the normal regulatory setting. The actual capacity extension is also lower in both cases. The case with a 50% on import lines reaches 86% of the total capacities of the normal regulatory case, and the pure EU case reaches 90% both with a small share of different extended connections. Thus despite less capacity extensions both cases slightly outperform the normal regulatory setting. Furthermore, in both settings the fixed tariff component reaches a positive value after 2015.

Another model characteristic which is unlikely to hold in a real market setting is the assumed unrestricted capacity extension between European countries within a ten year timeframe. A total investment volume of more than 250 bcm per year of new capacity is rather challenging to implement. In a further sensitivity run we therefore restrict capacity extensions to an upper limit of 5 bcm per year per connection. This small value will provide a proper lower bound of the approach's performance. In this case, the price and welfare performance are worse than in the normal regulatory setting. Especially to the end of the considered time period this case shows a higher divergence (figure 4), which is due to the increased demand in Europe requiring more transmission capacity which is capped in this setting. The total invested capacity is only about 30% of the regulatory case, of which 30% are on different connections. Those are mainly utilized to allow for more flows in the East European countries towards Italy as the 5 bcm cap limits the usage of the shortest connections. Nevertheless the majority of investment takes place on the same routes highlighting the general superiority of those connections for investment projects.

As a final sensitivity adjustment, an *RPI* factor is included into the regulatory cap (equation 11). As the underlying market conditions change in the model the regulator would need to adjust the cap accordingly to account for general demand and production changes outside the NO's influence. We simulate this by including a factor similar to the average demand increase in the European countries. In this setting, the performance of the normal regulatory approach can slightly be outperformed with a lower price level (figure 4) and a higher welfare level (figure 5). This is also confirmed in the

actual investment pattern. By including the RPI factor the total added capacity is more than 60% higher than in the normal regulated setting, and reaches 92% of the welfare optimum with 82% of those investments taking place on the same connections. Thus, by calibrating the target factors the regulator can achieve a slightly faster convergence to the welfare optimum.

In sum the carried out sensitivity scenarios show that the basic performance of the regulatory approach remains stable over critical model assumptions.

FIGURE 4. PRICE COMPARISON

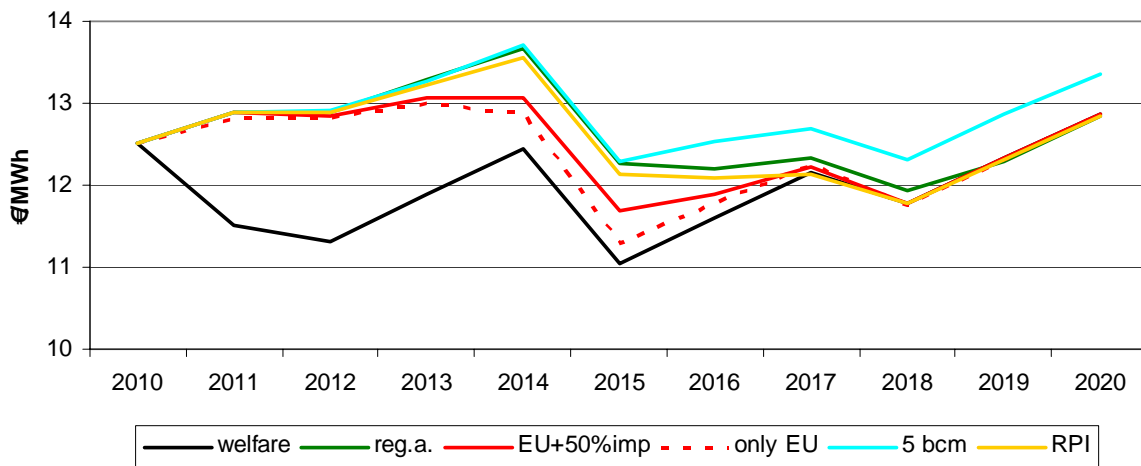
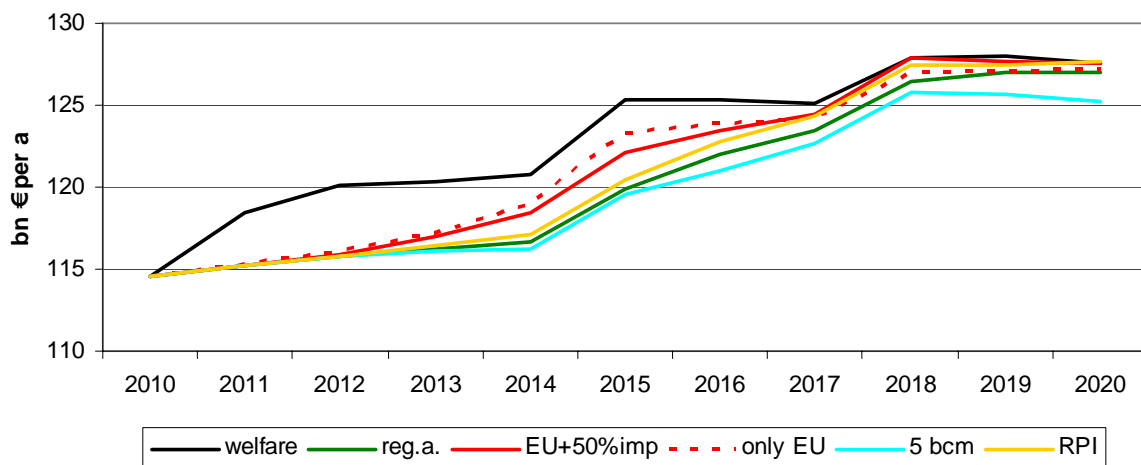


FIGURE 5. WELFARE COMPARISON



Conclusion

The literature on natural gas In this paper we studied the structure of incentives to expand natural-gas transportation pipelines in Europe. We proposed the implementation of a bi-level price-cap model and compared the obtained results with a base case, a no-regulation case, and a welfare benchmark. The lower level of the bi-level price-cap program maximizes social welfare (consumer surplus minus production costs, transport costs and LNG costs) subject to an upper limit on natural gas production, pipeline capacity, LNG capacity (both liquefaction and regasification capacity limits), storage capacity and energy balance. The upper level models the maximization of the flow of profits of a network operator subject to a cap constraint on its two-part tariff. The rebalancing of the fixed and the variable parts achieved over time the needed capacity investment for the natural-gas European pipeline network system, and converged to the efficient steady-state equilibrium.

More specifically, we found that in the welfare-optimal benchmark setting the NO extends the pipeline system largely on similar paths and capacity levels as in the regulatory two-part tariff setting. Meanwhile, a NO that unrestrictedly maximizes profits (without rebalancing its variable revenue and the fixed tariff) will invest in smaller amounts that will expand capacity less than the welfare optimal. Convergence of prices in the regulatory case also resembles that of the welfare-optimal benchmark, while overall consumer and producer surplus development furthermore confirms that the regulatory approach indeed approaches the welfare levels over time. The NO invests in transmission capacities between Russia and Germany, the Benelux states and France, Spain and France as well as between Africa and Italy, namely the areas in Europe with potential congestion in transmission lines. Thus, the regulatory approach based on Vogelsang (2001) and Hogan *et al.*, (2010) indeed provided a way to achieve an investment pattern in the European pipeline network close to welfare optimal conditions.

We obtained these results for the case when the NO was only allowed to invest in Europe whereas the transmission revenue was collected from the entire grid. This is rather unlikely for real world implementation, so we further assumed that the income from pipeline transport was only accounted for nodes connecting inner European nodes, while transport on import pipelines into the European network accounted for a 50% profit/cost split with the exporting country. Successively, we adjusted this last approach by also leaving out the revenues and costs from import pipelines, thus completely limiting the regulatory approach to inner European connections. Under all these more restrictive conditions, we observed a lower price level and a

faster welfare convergence of the regulatory two-part tariff approach than in the original setting.

Furthermore, when in our ten-year timeframe we constrained capacity extensions to less than 5 bcm per-year per-connection (acknowledging the real-world challenge of achieving larger investment capacity volumes), the majority of investment was finally carried out in the same routes as before. Additionally, the inclusion of an *RPI* factor into the regulatory cap also confirmed that under all the sensitivity scenarios the basic welfare-optimal performance of the regulatory two-part tariff approach prevailed.

Our analyses thus suggest that an incentive mechanism as the one proposed in this paper could contribute to the development of the entire European pipeline system, generating price convergence, capacity increases and considerable welfare improvements. This approach would also be coherent with the establishment of a harmonized European regulatory framework that could stimulate pipeline investment via stable market conditions. Directive 2009/713/EC provides a first step in this direction: vertical integration, ownership unbundling, and an ISO are required from all EU countries not later than 3rd of March 2012. Such a framework as well as the creation of a European Agency for the Cooperation of Energy Regulators (ACER) provides a real world institutional setting prone for a Hogan *et al.*, (2010) type of mechanism.

Of course, to reach fully applicability more granular data for pipeline, LNG and storage capacity should be considered, a fact that would increase the computational intensity of simulations. Likewise, other issues need to be considered in future research work, such as uncertain conditions in demand and supply, existence of market power, various distinct NOs and, probably more importantly, the investment trade-off among in pipelines, LNG terminals, and storage facilities.

References

- Armstrong, M., S. Cowan and J. Vickers (1994), "Regulatory Reform: Economic Analysis and British Experience", MIT Press.
- Bertoletti P. and C. Poletti (1997), Welfare effects of discriminatory two-part tariffs constrained by price caps. *Econ Let* 56: 292-298.
- Bauer, F., C. Bremberger and F. Kunz (2010), "Implementation of the Hogan, Rosellón, and Vogelsang (HRV) incentive mechanism into the InTraGas model", presentation at IAEE, Rio de Janeiro, Brazil, 06.06.-09.06.
- BP (2006): *Quantifying Energy - BP Statistical Review of World Energy*. June 2006. BP, London.
- Brito, D. L and J. Rosellón (2011), "Lumpy Investment in Regulated Natural Gas Pipelines: An Application of the Theory of the Second Best", *Network and Spatial Economics*, forthcoming.
- Crew, M. A., C.S. Fernando and P. R. Kleindorfer (1995), "The Theory of Peak-Load Pricing: A Survey", *Journal of Regulatory Economics*, 8: 215-248.
- ENTSOG (2011a), The European Natural Gas Network map. Retrieved from: <http://www.entsog.eu/mapsdata.html>
- ENTSOG (2011b), *European Ten Year Network Development Plan, 2011 - 2020*. European Network of Transmission System Operators for Gas
- Eurostat (2011), *Gas supply, monthly data (nrg_103m)*. Retrieved from: <http://epp.eurostat.ec.europa.eu>
- Fthenakis, V. J. E. Mason and K. Zweibel (2009), "The Technical, Geographical and Economic Feasibility for Solar Energy to Supply the Energy Needs of the U.S.," *Energy Policy*, vol. 37, pp. 387-399.
- Fraser, R. (1995), The relationship between the costs and prices of a multi-product monopoly: The role of price-cap regulation, *Journal of Regulatory Economics* 8, 23-31.
- Hogan, W., J. Rosellón and I. Vogelsang (2010), "A Combined Merchant-Regulatory Mechanism for Electricity Transmission Expansion", *Journal of Regulatory Economics*, vol. 38, no. 2, 113-143.
- _____ (2010), Toward a Combined Merchant-Regulatory Mechanism for Electricity Transmission Expansion, *Journal of Regulatory Economics*, 38(2), 113-143.
- Holz., C. von Hirschhausen and C. Kemfert (2009), "Perspectives of the European Natural Gas Market Until 2025", *The Energy Journal Special Issue*, 137-150 .
- International Energy Agency (IEA) (2006), *Natural Gas Information*. IEA/OECD, Paris.
- International Energy Agency (IEA) (2009), "*Natural Gas Market Review 2009*", ISBN: 9789264064133.
- Law, P. J. (1995a), Welfare effects of pricing in anticipation of Laspeyres price cap regulation--an example (Mimeo, Department of Economics, University of Warwick, Coventry).
- _____ (1995b), Tighter average revenue regulation can reduce consumer welfare, *The Journal of Industrial Economics* 43, 399-464.

- Loeb M. and W.A. Magat (1979), A decentralized method of utility regulation, *J Law & Econ* 22 (2):399-404.
- Myslíková, Z., J. Rosellón and E. Zenón (2011), "Incentives for Transmission Investment in the PJM Electricity Market: FTRs or Regulation (or both?)", *Utilities Policy*, vol. 19, Issue 1, January, pp. 3-13.
- Neu, W. (1993), Allocative inefficiency properties of price-cap regulation, *Journal of Regulatory Economics* 5, 159-182.
- Neumann, A., N. Viehrig and H. Weigt (2009), InTraGas - A Stylized Model of the European Natural Gas Network. Working Paper WP-RM-16, Dresden.
- OME (2005): *Assessment of Internal and External Gas Supply Options for the EU - Evaluation of the Supply Costs of the New Natural Gas Supply Projects to the EU and an Investigation of Related Financial Requirements and Tools*. Preliminary Draft.
- Rámirez, J. C. and J. Rosellón (2002), "Pricing Natural Gas Distribution in Mexico", *Energy Economics*, vol. 24, no. 3, pp. 231-248, May.
- Rosellón, J. (2009), "Mechanisms for the Optimal Expansion of Electricity Transmission Networks", in the International Handbook on the Economics of Energy (IHEE) edited by Evans J. and L. Hunt, Edward Elgar Publishing.
- Rosellón, J. and H. Weigt (2010), "A Dynamic Incentive Mechanism for Transmission Expansion in Electricity Networks-Theory, Modeling and Application", *The Energy Journal*, vol. 32, no. 1.
- Sibley D. (1989), Asymmetric information, incentives and price-cap regulation. *RAND J Econ* 20 (3): 392-404.
- Vogelsang I (1989), Two-part tariffs as regulatory constraints. *J Pub Econ* 39(1): 45-66.
- _____ (1989), "Two-Part Tariffs as Regulatory Constraints", *Journal of Public Economics* 39, 1989, pp. 45-66.
- _____ (2001), "Price Regulation for Independent Transmission Companies", *Journal of Regulatory Economics*, 20(2): 141-165, September.
- Vogelsang, I. and Finsinger J. (1979), A Regulatory Adjustment Process for Optimal Pricing by Multiproduct Monopoly Firms. *The Bell Journal of Economics*, vol. 10 (1). Pp. 157-171. Spring.

Novedades

DIVISIÓN DE ADMINISTRACIÓN PÚBLICA

- Ernesto Flores-Roux y Judith Mariscal, *The Development of Mobile Money Systems*, DTAP-256
- David Arellano *et al.*, *Control de los conflictos de interés*, DTAP-255
- David Arellano, Víctor Figueras y Walter Lepore, *Política de tránsito en el DF de México: una introducción a su estudio empírico*, DTAP-254
- Sergio Cárdenas y Maximiliano Cárdenas, *La participación del poder legislativo en la definición de la política educativa en México*, DTAP-253
- Sergio Cárdenas, *Administración centrada en la escuela*, DTAP-252
- Joanna D. Lucio, Edgar Ramírez y Sergio Cárdenas, *¿Libertad para quién? El efecto de comunidades cerradas en el espacio urbano*, DTAP-251
- Edgar E. Ramírez, *Land Development Permitting*, DTAP-250
- Rodrigo Sandoval-Almazán, Luis F. Luna-Reyes y J. Ramón Gil-García, *Índice de Gobierno Electrónico Estatal: La medición 2009*, DTAP-249
- J. Ramón Gil García y Armando Aldama, *Gobierno electrónico en Canadá: Antecedentes, objetivos, estrategias y resultados*, DTAP-248
- J. Ramón Gil García y Luis F. Luna Reyes, *Teoría institucional y simulación dinámica para una mejor comprensión del gobierno electrónico*, DTAP-247

DIVISIÓN DE ECONOMÍA

- David Mayer y Grodecz Ramírez, *Ciclo de vida humano y ciclo de vida urbano: Urbanización y desarrollo económico*, DTE-503
- Kaniska Dam y Daniel Ruiz Pérez, *On the Existence of Sharecropping*, DTE-502
- David Mayer, *Urbanization as a Fundamental Cause of Development*, DTE-501
- Arturo Antón y Alan Villegas, *El papel de la tasa de interés real en el ciclo económico de México*, DTE-500
- Víctor Carreón, *La arquitectura de mercado del sector eléctrico mexicano*, DTE-499
- Sonia Di Giannatale *et al.*, *Confianza, redes sociales y hábitos financieros: un estudio empírico*, DTE-498
- Antonio Jiménez, *Coordination Incentives for Information Acquisition with a Finite Set of Players*, DTE-497
- Rodolfo Cermeño *et al.*, *Trade Flows and Volatility of their Fundamentals: Some Evidence from Mexico*, DTE-496
- Kaniska Dam, *Principal-Agent Assignment*, DTE-495
- Luciana Moscoso, *Who Runs Against the Incumbent? Candidate Entry Decisions*, DTE-494

DIVISIÓN DE ESTUDIOS INTERNACIONALES

- Farid Kahhat, *Las industrias extractivas y sus implicaciones políticas y económicas*, DTEI-212
- Mariana Magaldi de Sousa, *Trade Openness and the Channels of its Impact on Democracy*, DTEI-211
- Mariana Magaldi de Sousa, *The Embedded-Agency Approach to Bank Regulation*, DTEI-210
- Lorena Ruano, *The Europeanization of National Foreign Policies Towards Latin America...*, DTEI-209
- Álvaro Morcillo, *Towards Europeanization?*, DTEI-208
- Kimberly A. Nolan García, *Enforcement by Design: The Legalization of Labor Rights Mechanisms in US Trade Policy*, DTEI-207
- Kimberly A. Nolan García, *Norms Socialization and NAFTA's Side Accord on Labor*, DTEI-206
- Jorge Chabat, *Combatting Drugs in Mexico Under Calderon*, DTEI-205
- David Crow, *(Can't Get No) Satisfaction: An Application of Dynamic Loglinear Models...*, DTEI-204
- Ugo Pipitone, *Los daños del rey sabio: Mao y China*, DTEI-203

DIVISIÓN DE ESTUDIOS JURÍDICOS

- María Solange Maqueo, *Mecanismos de tutela de los derechos de los beneficiarios*, DTEJ-53
- Rodolfo Sarsfield, *The Mordida's Game. How institutions incentive corruption*, DTEJ-52
- Ángela Guerrero, Alejandro Madrazo, José Cruz y Tania Ramírez, *Identificación de las estrategias de la industria tabacalera en México*, DTEJ-51
- Estefanía Vela, *Current Abortion Regulation in Mexico*, DTEJ-50
- Adriana García and Alejandro Tello, *Salaries, Appellate Jurisdiction and Judges Performance*, DTEJ-49
- Ana Elena Fierro and Adriana García, *Design Matters: The Case of Mexican Administrative Courts*, DTEJ-48
- Gustavo Fondevila, *Estudio de percepción de magistrados del servicio de administración de justicia familiar en el Distrito Federal*, DTEJ-47
- Jimena Moreno, Xiao Recio Blanco y Cynthia Michel, *La conservación del acuario del mundo*, DTEJ-46
- Gustavo Fondevila, *"Madrinas" en el cine. Informantes y parapolicías en México*, DTEJ-45
- María Mercedes Albornoz, *Utilidad y problemas actuales del crédito documentario*, DTEJ-44

DIVISIÓN DE ESTUDIOS POLÍTICOS

- Francisco Javier Aparicio and Covadonga Meseguer, *Supply or Demand? Politics and the 3x1 Program for Migrants*, DTEP-228
- Ana Carolina Garriga and Brian J. Phillips, *Foreign Aid and Investment in Post-Conflict Countries*, DTEP-227
- Allyson Benton, *The Origins of Mexico's Municipal Usos y Costumbres Regimes*, DTEP-226
- Ana Carolina Garriga, *Objetivos, instrumentos y resultados de política monetaria. México 1980-2010*, DTEP-225
- Andreas Schedler, *The Limits to Bureaucratic Measurement. Observation and Judgment in Comparative Political Data Development*, DTEP-224
- Andrea Pozas and Julio Ríos, *Constituted Powers in Constitution-Making Processes. Supreme Court Judges, Constitutional Reform and the Design of Judicial Councils*, DTEP-223
- Andreas Schedler, *Transitions from Electoral Authoritarianism*, DTEP-222
- María de la Luz Inclán, *A Preliminar Study on Pro and Counter Zapatista Protests*, DTEP-221
- José Antonio Crespo, *México 2009: Abstención, voto nulo y triunfo del PRI*, DTEP-220
- Andreas Schedler, *Concept Formation in Political Science*, DTEP-219

DIVISIÓN DE HISTORIA

- Michael Sauter, *Human Space: The Rise of Euclidism and the Construction of an Early-Modern World, 1400-1800*, DTH-75
- Michael Sauter, *Strangers to the World: Astronomy and the Birth of Anthropology in the Eighteenth Century*, DTH-74
- Jean Meyer, *Una revista curial antisemita en el siglo XIX: Civiltá Cattolica*, DTH-73
- Jean Meyer, *Dos siglos, dos naciones: México y Francia, 1810- 2010*, DTH-72
- Adriana Luna, *La era legislativa en Nápoles: De soberanías y tradiciones*, DTH-71
- Adriana Luna, *El surgimiento de la Escuela de Economía Política Napolitana*, DTH-70
- Pablo Mijangos, *La historiografía jurídica mexicana durante los últimos veinte años*, DTH-69
- Sergio Visacovsky, *"Hasta la próxima crisis". Historia cíclica, virtudes genealógicas y la identidad de clase media entre los afectados por la debacle financiera en la Argentina (2001-2002)*, DTH-68
- Rafael Rojas, *El debate de la Independencia. Opinión pública y guerra civil en México (1808-1830)*, DTH-67
- Michael Sauter, *The Liminality of Man: Astronomy and the Birth of Anthropology in the Eighteenth Century*, DTH-66

Ventas

El CIDE es una institución de educación superior especializada particularmente en las disciplinas de Economía, Administración Pública, Estudios Internacionales, Estudios Políticos, Historia y Estudios Jurídicos. El Centro publica, como producto del ejercicio intelectual de sus investigadores, libros, documentos de trabajo, y cuatro revistas especializadas: *Gestión y Política Pública*, *Política y Gobierno*, *Economía Mexicana Nueva Época* e *Istor*.

Para adquirir cualquiera de estas publicaciones, le ofrecemos las siguientes opciones:

VENTAS DIRECTAS:	VENTAS EN LÍNEA:
Tel. Directo: 5081-4003 Tel: 5727-9800 Ext. 6094 y 6091 Fax: 5727 9800 Ext. 6314 Av. Constituyentes 1046, 1er piso, Col. Lomas Altas, Del. Álvaro Obregón, 11950, México, D.F.	Librería virtual: www.e-cide.com Dudas y comentarios: publicaciones@cide.edu

¡¡Colecciones completas!!

Adquiere los CDs de las colecciones completas de los documentos de trabajo de todas las divisiones académicas del CIDE: Economía, Administración Pública, Estudios Internacionales, Estudios Políticos, Historia y Estudios Jurídicos.



¡Nuevo! ¡¡Arma tu CD!!



Visita nuestra Librería Virtual www.e-cide.com y selecciona entre 10 y 20 documentos de trabajo. A partir de tu lista te enviaremos un CD con los documentos que elegiste.